

Installing Your D-Link Wireless Router

In the box

Ensure the box contains the following items. See [Figure 1](#).

- D-Link Wireless N300 Cloud Router, DIR-619L
- Power supply, 12V/1A
- Ethernet cable



Figure 1: Kit contents

If you do not subscribe to HughesNet Voice, follow the instructions in [Installing the router without HughesNet Voice](#) on panel 2.

If you do subscribe to HughesNet Voice, follow the instructions in [Installing the router with HughesNet Voice](#) on panel 4.

1

Installing the router without HughesNet Voice

Only follow the steps in this section if you do not subscribe to HughesNet Voice.

When you have completed the steps in this section, your connections will be the same as those shown in [Figure 2](#). Refer to the figure when performing the steps.

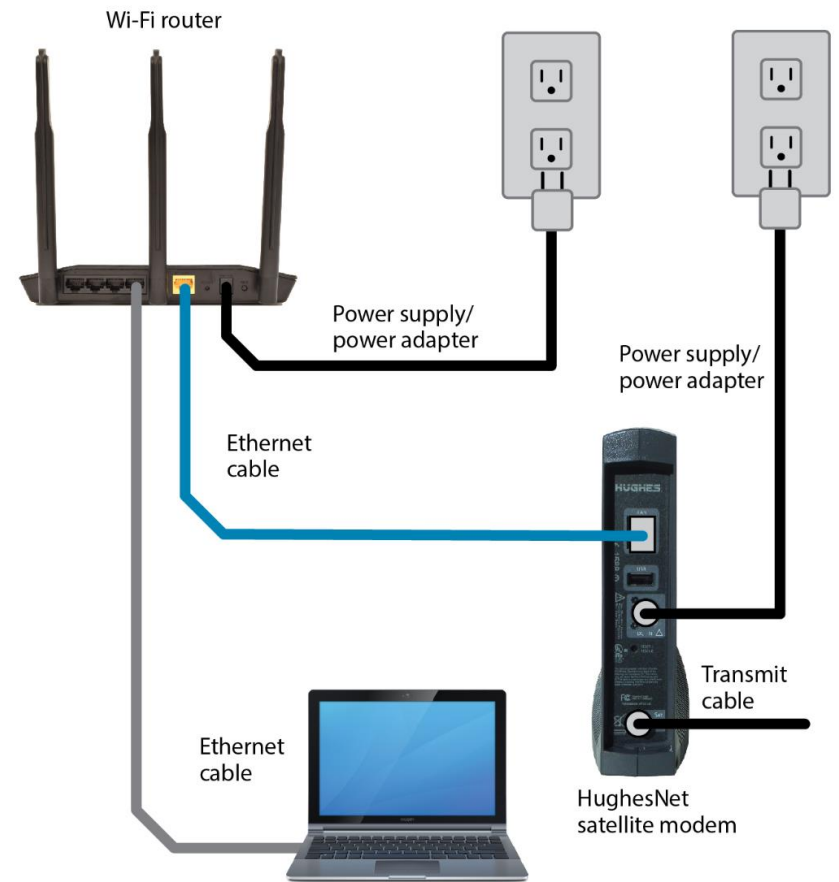


Figure 2: Wireless router connections without Voice

2

Installing the router without HughesNet Voice (cont.)

1. Ensure there is nothing plugged into the LAN port on your HughesNet modem (such as your laptop or PC). If there is, remove it.
2. Connect the blue Ethernet cable provided in the kit to the LAN port on your modem.
3. Connect the other end of the blue Ethernet cable to the yellow LAN port on the D-Link wireless router.
4. Connect the power supply provided in the kit to the wireless router.
5. Plug the power supply into an electrical outlet or surge protector.
6. **[Optional]** Using an Ethernet cable, connect your laptop or PC to a LAN port on the wireless router. This provides a direct, wired connection to the network.
7. Ensure all of your connections match those shown in [Figure 2](#).
8. Verify the power light on the wireless router is lit. See [Figure 3](#).
9. Wait 2 minutes, then check that the power, Internet, and Wi-Fi signal lights on the top of the router are lit. If anything is plugged into the router LAN ports, those lights will also illuminate. See [Figure 3](#).

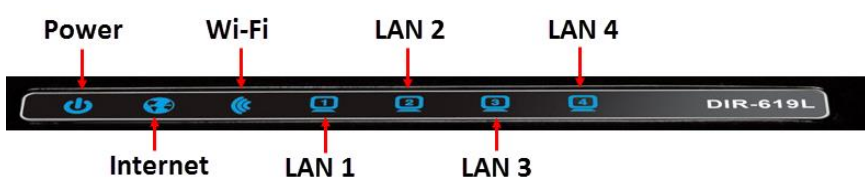


Figure 3: Router LEDs

10. Proceed to [Logging into your new wireless network](#) on panel 6.

3

Installing the router with HughesNet Voice

Only follow the steps in this section if you subscribe to HughesNet Voice.

When you have completed the steps in this section, your connections will be the same as those shown in [Figure 4](#). Refer to the figure when performing the steps.

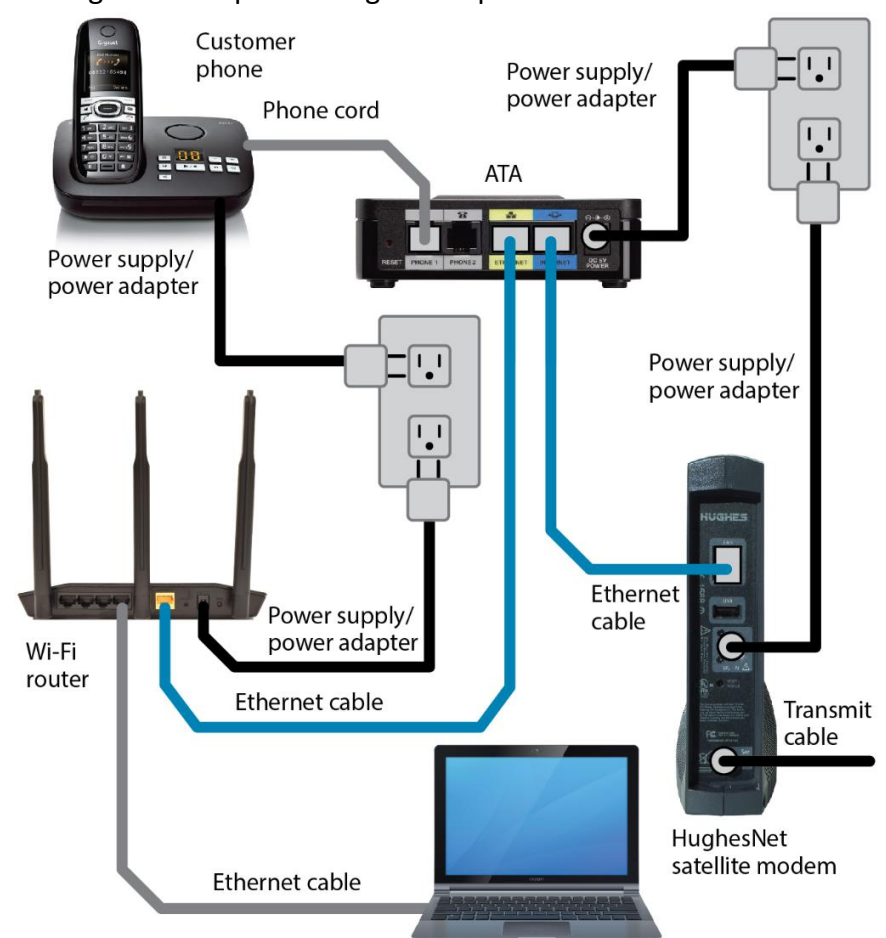


Figure 4: Wireless router connections with Voice

4

Installing the router with HughesNet Voice (cont.)

1. Ensure there is nothing plugged into the yellow LAN port on the HughesNet Voice ATA (such as your laptop or PC). If there is, remove it.

Leave other ATA cable connections as they are.

2. Connect the blue Ethernet cable provided in the kit to the yellow LAN port on the HughesNet Voice ATA.
3. Connect the other end of blue Ethernet cable to the yellow LAN port on the D-Link wireless router.
4. Connect the power supply provided in the kit to the wireless router.
5. Plug the power supply into an electrical outlet or surge protector.
6. **[Optional]** Using an Ethernet cable, connect your laptop or PC to a LAN port on the wireless router. This provides a direct, wired connection to the network.
7. Ensure all of your connections match those shown in [Figure 4](#).
8. Verify the power light on the wireless router is lit. See [Figure 5](#).
9. Wait 2 minutes, then check that the power, Internet, and Wi-Fi signal lights on the top of the router are lit. If anything is plugged into the router LAN ports, those lights will also illuminate. See [Figure 5](#).

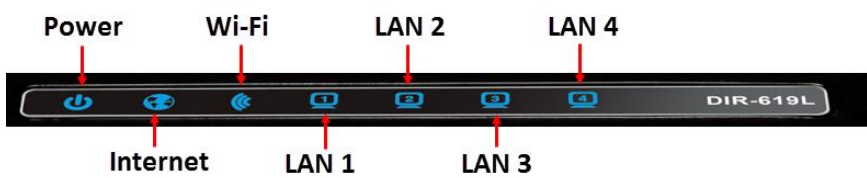


Figure 5: Router LEDs

10. Proceed to [Logging into your new wireless network](#) on panel 6.

5

Logging into your new wireless network

Follow the steps in this section to log into the network. The router comes preconfigured with a wireless network name (SSID) and password. The numbers in [Figure 6](#) correspond to the configuration steps.

Note: Different devices will have different interfaces, but selecting your Wi-Fi name and then entering the password will work the same way as described below.

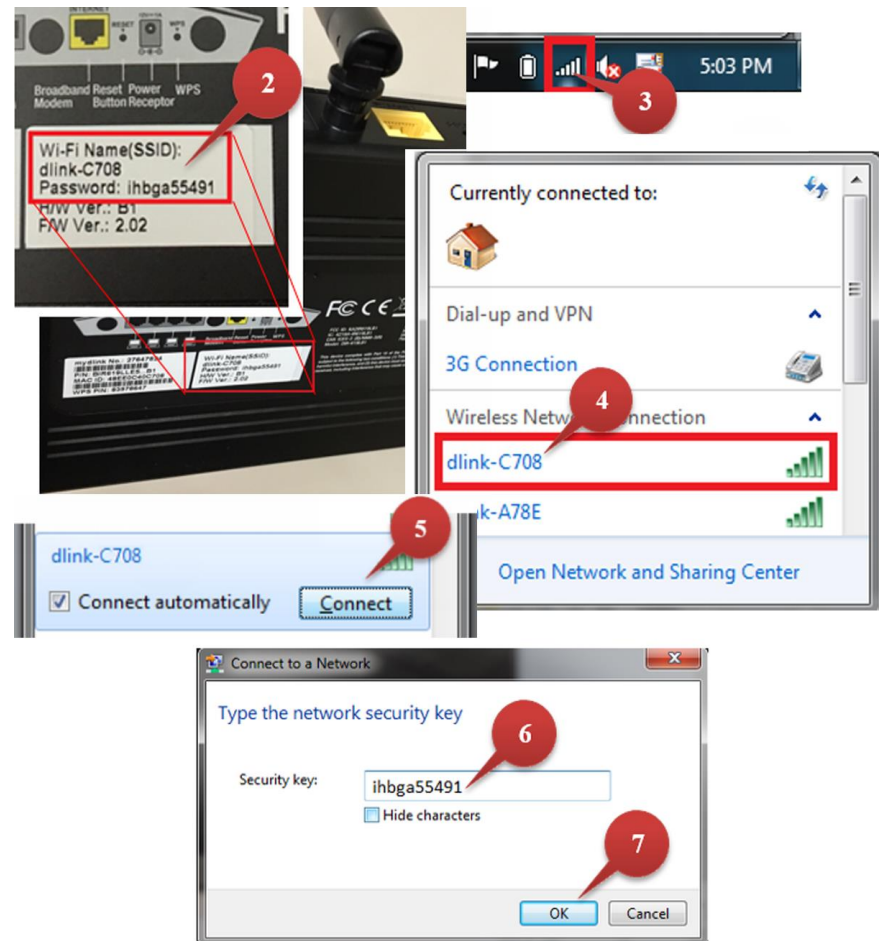


Figure 6: Logging into and configuring the router

1. Turn on any wireless device and ensure its Wi-Fi is turned on.
2. Identify the Wi-Fi name (SSID) and password on the bottom of the D-Link wireless router. In [Figure 6](#), these are “dlink-C708” and “ihbga55491”. Yours will be different.

6

Logging into your new wireless network (cont.)

3. On your wireless device, click the wireless network icon to launch a window that shows available wireless networks.
4. From the window, click the Wi-Fi name that matches the one listed on the router. In this example, it is “dlink-C708”. Yours will be different.
5. The option to connect to the network appears beneath the router name. Check the *Connect automatically* checkbox and click **Connect**.
6. You are prompted for a network security key (password). Enter the password listed on the router. In this example, it is “ihbga55491”. Yours will be different.
7. Click **OK**.

You are now logged onto your new wireless network.

Troubleshooting

Setup and configuration problems

1. How do I configure my router, or check my wireless network name (SSID) and wireless encryption key?
 - a. Ensure the router is connected to your PC with an Ethernet cable.
 - b. Open a web browser and enter the address: <http://dlinkrouter>
 - c. Log into the router. The default username is **admin**. The password is left blank by default.
 - d. If you have changed the password and cannot remember it, you will need to reset the router to set the password back to the default.

2. How do I reset my router to factory default settings?

Note: Resetting the router to factory default settings will erase your current configuration settings.

- a. Ensure the router is powered on.
- b. Press and hold the reset button (on the rear of the router) for 20 seconds.

7

Troubleshooting (cont.)

3. How do I add a new wireless client or PC if I have forgotten my wireless network name (SSID) or wireless encryption key?
 - a. Any device connecting to the router wirelessly needs the SSID and encryption key to do so.
 - b. Use the router’s web user interface to check those settings or change them.
 - c. Be sure to write down these settings and store them in a secure location.

Technical support

You can find software updates and user documentation on the D-Link website at www.dlink.com.

Record your router information

Use the space below to write your wireless network name (SSID) and password. Keep these in a secure location.

SSID: _____

Password: _____

Copyright © 2015 Hughes Network Systems, LLC

All rights reserved. This publication and its contents are proprietary to Hughes Network Systems, LLC. No part of this publication may be reproduced in any form or by any means without the written permission of Hughes Network Systems, LLC, 11717 Exploration Lane, Germantown, Maryland 20876. Hughes Network Systems, LLC has made every effort to ensure the correctness and completeness of the material in this document. Hughes Network Systems, LLC shall not be liable for errors contained herein. The information in this document is subject to change without notice. Hughes Network Systems, LLC makes no warranty of any kind with regard to this material, including, but not limited to, the implied warranties of merchantability and fitness for a particular purpose.

Trademarks

Hughes, HughesNet, and Hughes Network Systems are trademarks of Hughes Network Systems, LLC. All other trademarks are the property of their respective owners.

8